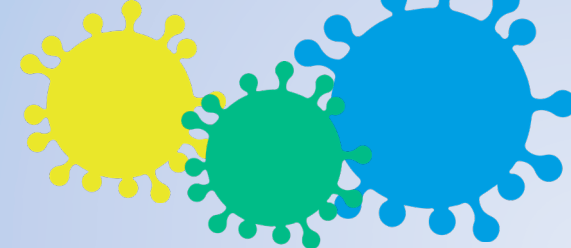


# TENNIS PRACTICE

## COVID-19 / GUIDELINES

Update : April 14<sup>th</sup>, 2021

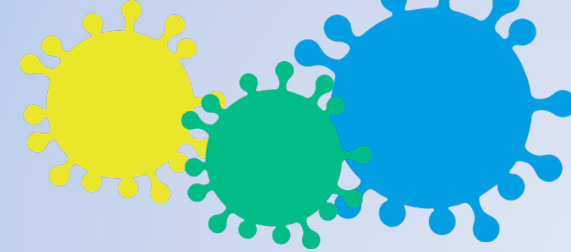


	YELLOW ZONE	ORANGE ZONE	RED ZONE	EMERGENCY MEASURES
OUTDOOR	<ul style="list-style-type: none"> <li>Recreational practice in singles for participants from different residences or in doubles for occupants of the same residence is <b>permitted</b>.</li> <li>Group activities of up to <b>12</b> people, including doubles, are <b>permitted</b> under the supervision of a supervisor or coach.</li> <li>Competitions are <b>not allowed</b>.</li> <li>Spectators are not allowed on site, <b>however</b> an accompanying person is <b>allowed</b> for children under 10 years old and people with disabilities.</li> <li>Changing rooms <b>may be opened</b> according to the sanitary measures in place.</li> </ul>	<ul style="list-style-type: none"> <li>Recreational practice in singles for participants from different residences or in doubles for occupants of the same residence is <b>permitted</b>.</li> <li>Group activities of up to <b>12</b> people, including doubles, are <b>permitted</b> under the supervision of a supervisor or coach.</li> <li>Competitions are <b>not allowed</b>.</li> <li>Spectators are not allowed on site, <b>however</b> an accompanying person is <b>allowed</b> for children under 10 years old and people with disabilities.</li> <li>Changing rooms must be <b>closed</b>, but access to the sanitary facilities is <b>permitted</b>.</li> </ul>	<ul style="list-style-type: none"> <li>Recreational practice in singles for participants from different residences or in doubles for occupants of the same residence is <b>permitted</b>.</li> <li>Group activities of up to <b>8</b> people, including doubles, are <b>permitted</b> under the supervision of a supervisor or coach.</li> <li>Competitions are <b>not allowed</b>.</li> <li>Spectators are not allowed on site, <b>however</b> an accompanying person is <b>allowed</b> for children under 10 years old and people with disabilities.</li> <li>Changing rooms must be <b>closed</b>, but access to the sanitary facilities is <b>permitted</b>.</li> </ul>	<ul style="list-style-type: none"> <li>Recreational practice in singles for participants from different residences or in doubles for occupants of the same residence is <b>permitted</b>.</li> <li>Group activities of up to <b>8</b> people, including doubles, are <b>permitted</b> under the supervision of a supervisor or coach.</li> <li>Competitions are <b>not allowed</b>.</li> <li>Spectators are not allowed on site, <b>however</b> an accompanying person is <b>allowed</b> for children under 10 years old and people with disabilities.</li> <li>Changing rooms must be <b>closed</b>, but access to the sanitary facilities is <b>permitted</b>.</li> </ul>

# TENNIS PRACTICE

## COVID-19 / GUIDELINES

Update : April 14<sup>th</sup>, 2021

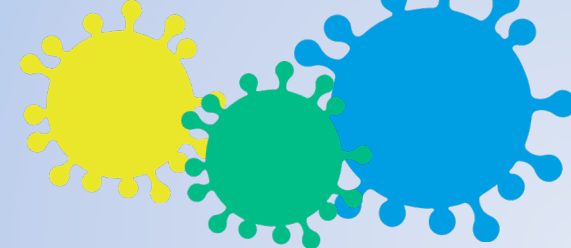


	YELLOW ZONE	ORANGE ZONE	RED ZONE	EMERGENCY MEASURES
INDOOR	<ul style="list-style-type: none"> <li>Recreational practice in singles for participants from different residences or in doubles for occupants of the same residence is <b>permitted</b>.</li> <li>Group activities of up to <b>12</b> people, including doubles, are <b>permitted</b> under the supervision of a supervisor or coach.</li> <li>Competitions are <b>not allowed</b>.</li> <li>Spectators are not allowed on site, <b>however</b> an accompanying person is <b>allowed</b> for children under 10 years old and people with disabilities.</li> <li>Changing rooms <b>may be opened</b> according to the sanitary measures in place.</li> <li>Tennis facility owners and managers must determine and display the maximum capacity of players at any one time.</li> </ul>	<ul style="list-style-type: none"> <li>Recreational practice in singles for participants from different residences or in doubles for occupants of the same residence is <b>permitted</b>.</li> <li>Private lessons are <b>allowed</b>. Group lessons are <b>only allowed</b> for occupants of the same residence.</li> <li>Competitions are <b>not allowed</b>.</li> <li>Spectators are not allowed on site, <b>however</b> an accompanying person is <b>allowed</b> for children under 10 years old and people with disabilities.</li> <li>Changing rooms must be <b>closed</b>, but access to the sanitary facilities is <b>permitted</b>.</li> <li>Tennis facility owners and managers must determine and display the maximum capacity of players at any one time.</li> </ul>	<ul style="list-style-type: none"> <li>Recreational practice in singles for participants from different residences or in doubles for occupants of the same residence is <b>permitted</b>.</li> <li>Private lessons are <b>allowed</b>. Group lessons are <b>only allowed</b> for occupants of the same residence.</li> <li>Competitions are <b>not allowed</b>.</li> <li>Spectators are not allowed on site, <b>however</b> an accompanying person is <b>allowed</b> for children under 10 years old and people with disabilities.</li> <li>Changing rooms must be <b>closed</b>, but access to the sanitary facilities is <b>permitted</b>.</li> <li>Tennis facility owners and managers must determine and display the maximum capacity of players at any one time.</li> </ul>	<p>The practice of tennis in indoor facilities is <b>forbidden</b>.</p>

# TENNIS PRACTICE

## COVID-19 / GUIDELINES

Update : April 14<sup>th</sup>, 2021



	YELLOW ZONE	ORANGE ZONE	RED ZONE	EMERGENCY MEASURES
PRIMARY AND SECONDARY SCHOOLS	<p><b>OUTDOOR</b></p> <ul style="list-style-type: none"> <li>Activities within stable class groups or with a maximum of 12 students (intra-school; may come from different stable class groups) are <b>allowed</b>.</li> </ul> <p><b>INDOOR</b></p> <ul style="list-style-type: none"> <li>Activities in stable class groups or with a maximum of 12 students (intra-school; may come from different stable class groups) are <b>allowed. However</b>, practice must be adapted to respect physical distancing of two metres between stable class groups.</li> </ul>	<ul style="list-style-type: none"> <li>The activities of recognized sport-study and concentration programs are <b>maintained</b>.</li> <li>Extracurricular activities for a stable class group are <b>permitted</b>.</li> <li>Competitions and spectators are <b>not permitted</b>.</li> <li>Access to the changing rooms is <b>permitted</b> for students involved.</li> </ul>	<p>The activities of recognized sport-study and concentration programs are <b>maintained</b>.</p>	<p>All face-to-face activities are <b>prohibited</b>, including sport-study programs and other concentration programs.</p>